

ST2100PLC Firmware Update Procedure

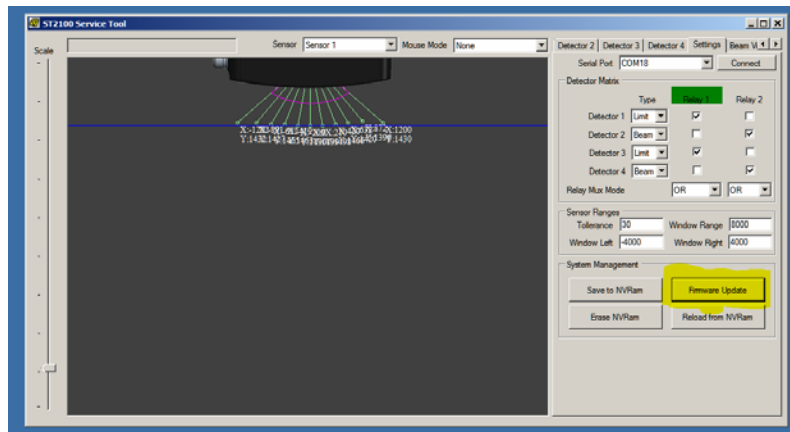
Required Software - Download from www.southerntech.co.nz/st2100

- DfuSe Demo Utility
- V1.3 Firmware Update File

Step 1) Download and unzip the upgrade files

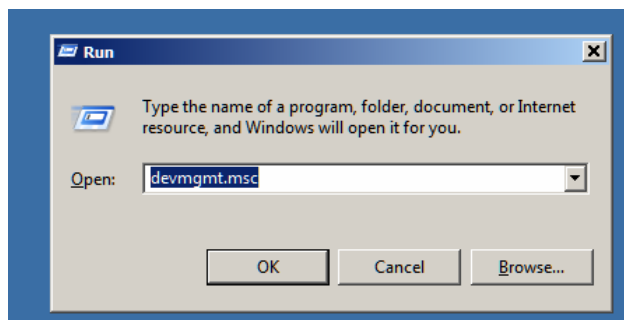
Step 2) Install “DfuSe Utility” Follow on screen prompts.

Step 3) Connect to the ST2100 and Click “Firmware Update”

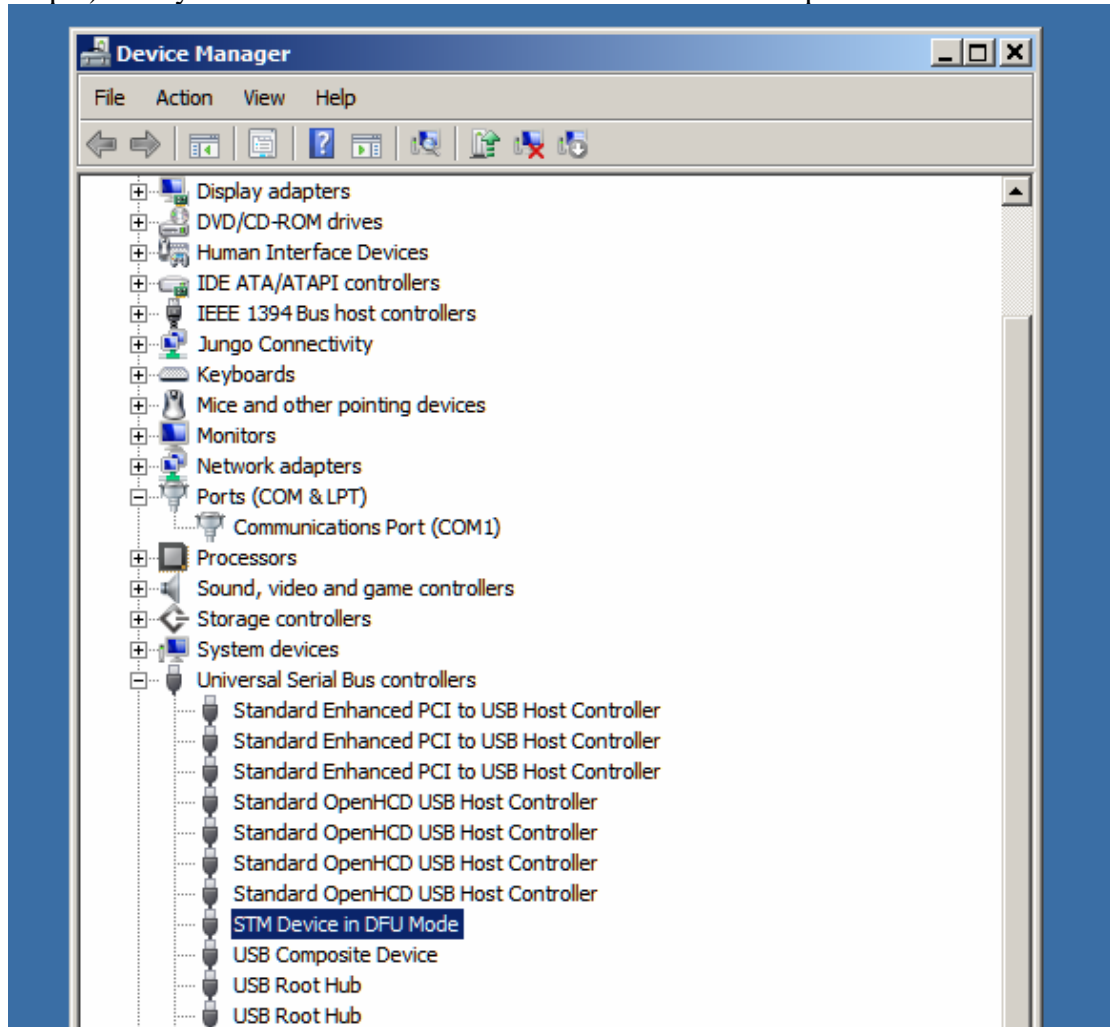


The Device will reboot into a special Boot Loader Mode

Step 4) Press and Hold the Windows Logo Key (between Alt and Ctrl) then Press ‘R’
You should see the “Run” window, type “devmgmt.msc” and click OK.



Step 5) Verify that the 'STM Device in DFU Mode' device is present and installed

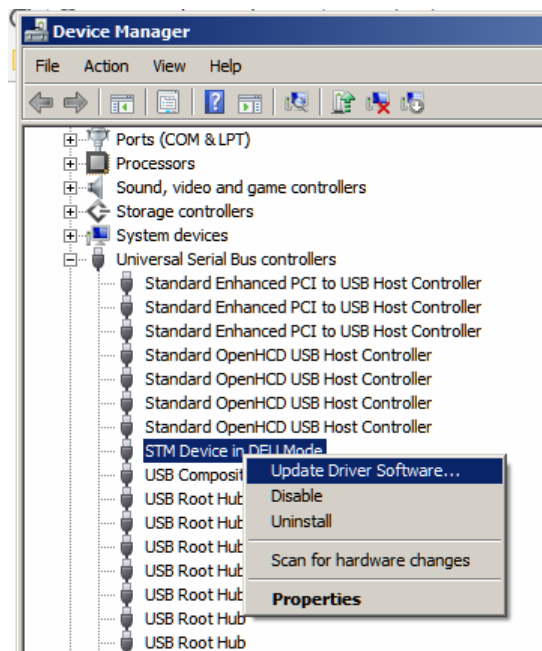


If this is installed, skip to Step 7

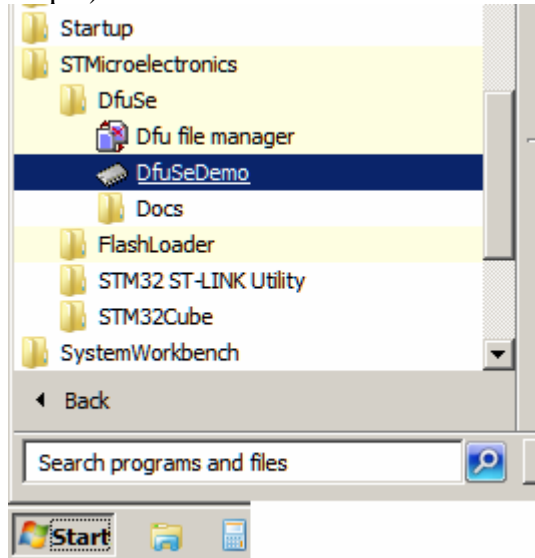
Step 6) If the device did not install automatically, and shows STM32 BOOTLOADER, Right Click, Update Driver, Browse My Computer, Browse, and select

“C:\Program Files (x86)\STMicroelectronics\Software\DfuSe v3.0.5\Bin\Driver”

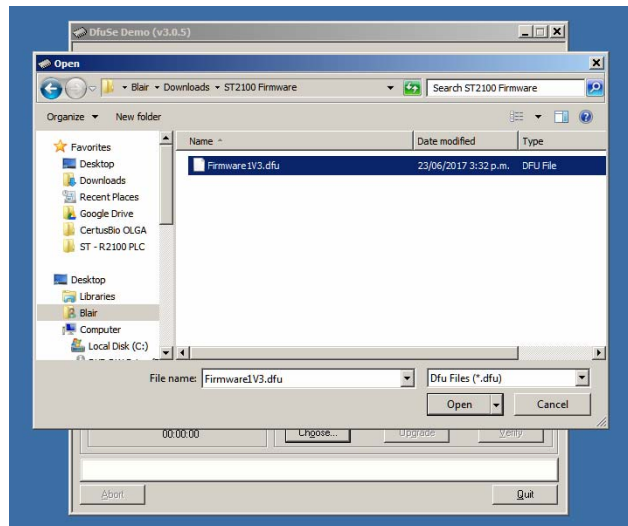
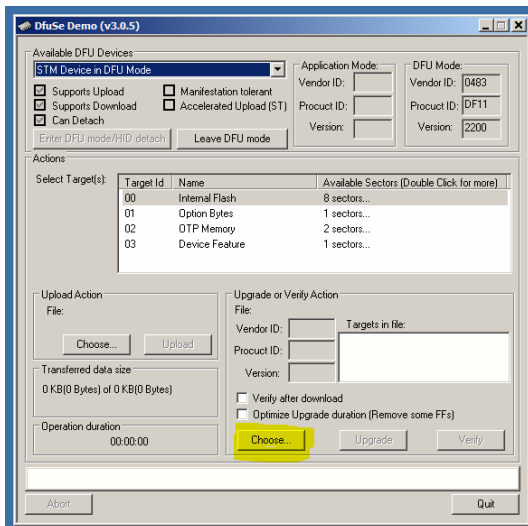
Click Next, Follow, and it should install properly.



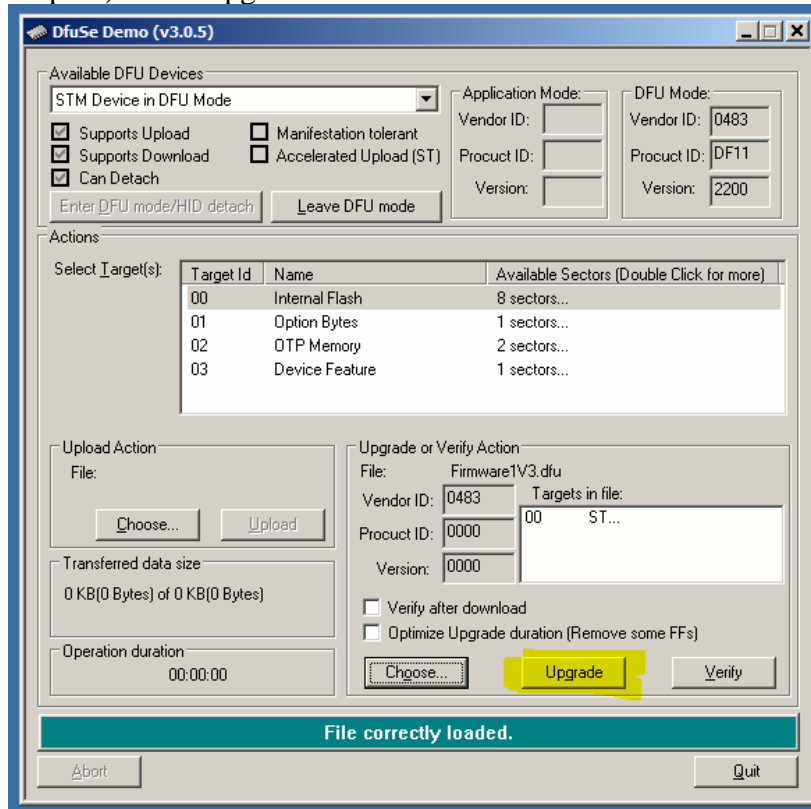
Step 7) Run DfuSeDemo



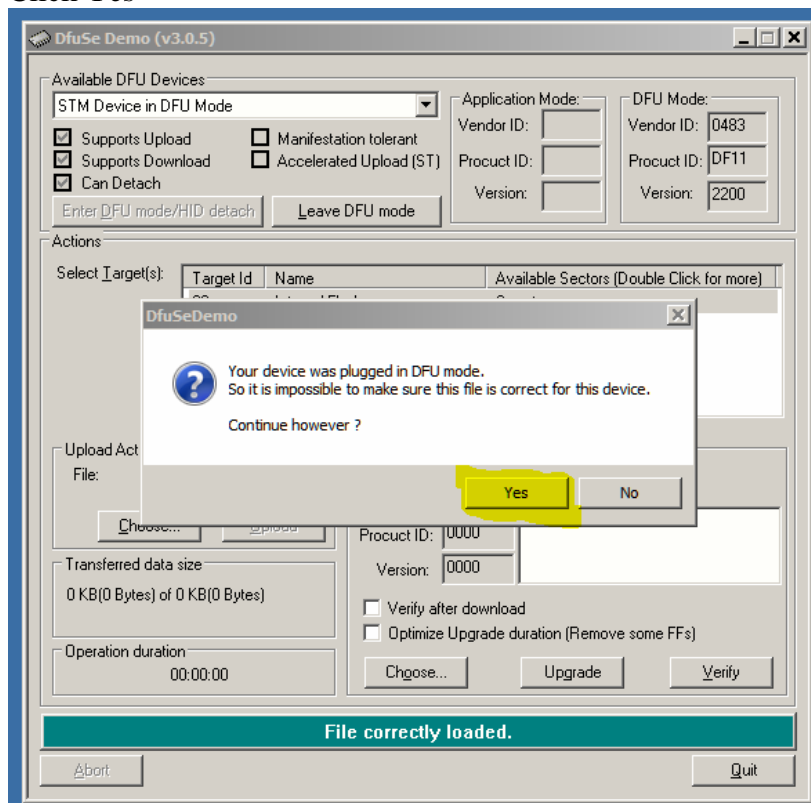
Step 8) Select "Choose" and Locate the downloaded "Firmware1V3.dfu"



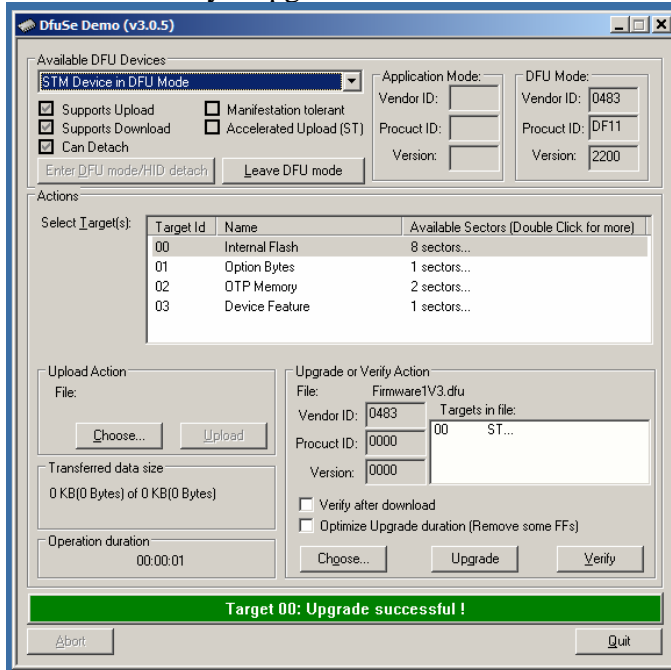
Step 10) Click Upgrade



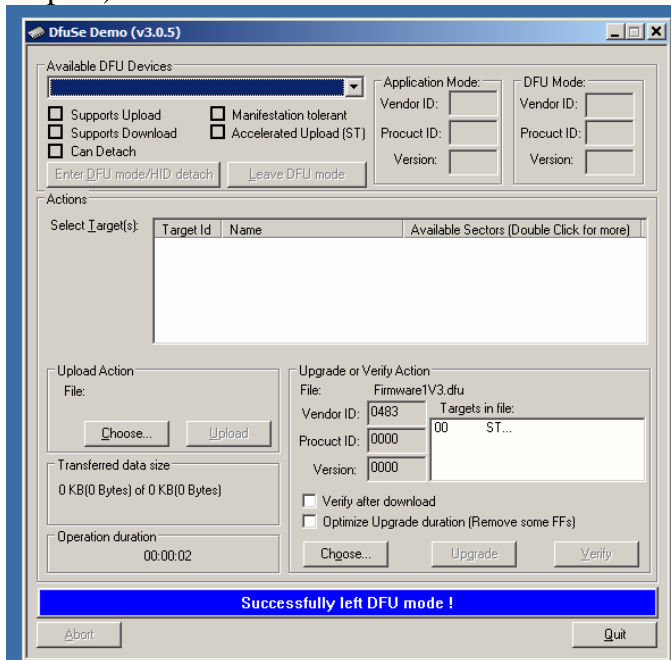
Click Yes



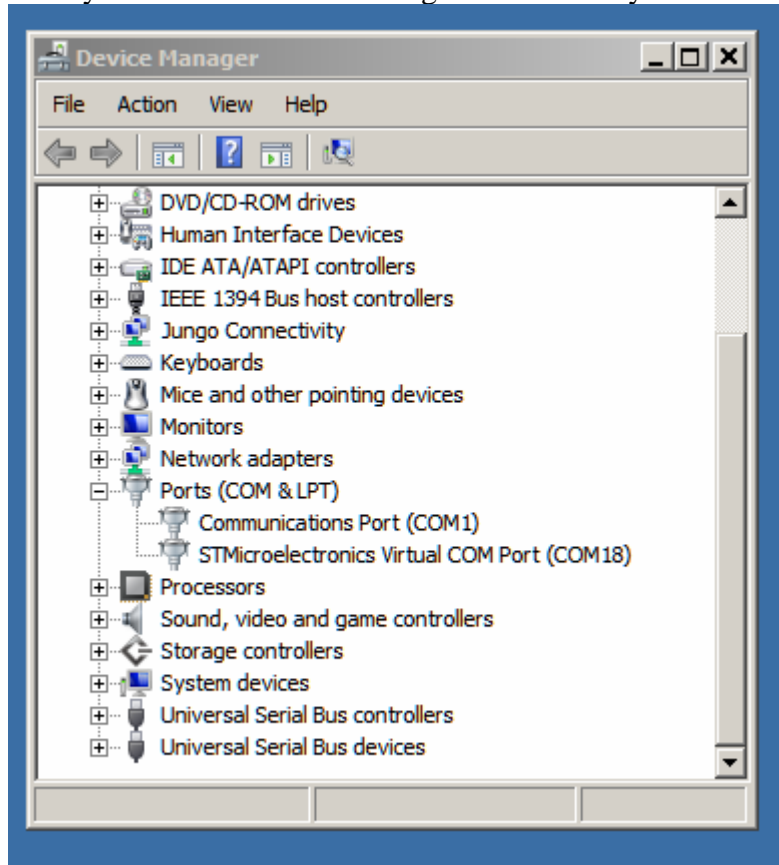
Wait for it to say “Upgrade Successful”



Step 11) Click “Leave DFU Mode”



Finally Check The device has registered correctly in Device Manager



The upgrade is now complete;

Step 12) Install the Latest version of the Service Tool from www.southerntech.co.nz/st2100